

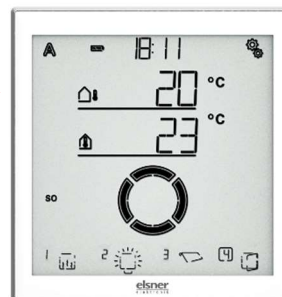
Netzzuleitung 230 V 3-adrig

Wetterstation Solexa II



← - - Funkverbindung - - →

Bedienteil



← - - Funkverbindung - - →

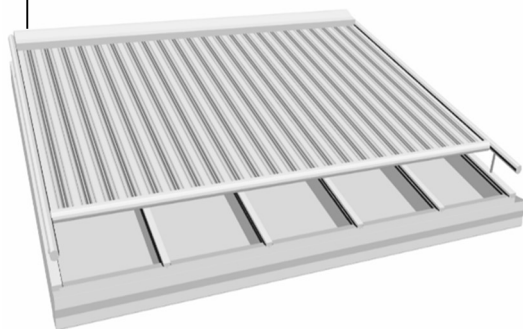


RF-MSG-ST
Funkaktor



RF-MSG-ST
Funkaktor

4-adrig



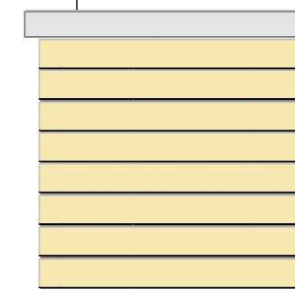
Markise (230V)

4-adrig



Weitere Komponenten z. Bsp. Fenster, Jalousien, Licht, Heizung etc. (230V)
über Funkaktoren

4-adrig



Datenblatt:	DB 4.4-6
Stand:	10.05.2016